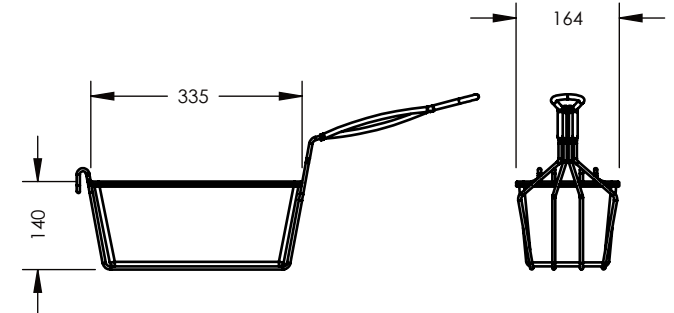


**MC0611
FRYER BASKET**



DO NOT SCALE.
UNLESS OTHERWISE NOTED:
DIMENSIONS ARE IN mm.
ALL FOLD DIMENSIONS
SHOWN ARE INSIDE SIZES.

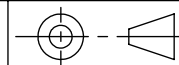
TOLERANCES:
LINEAR: +/-0.5mm
ANGULAR: +/-1.0°

AUSTHEAT 800 SERIES FRYER

VERSION #:
V6

DRAWN	SN
DATE	31/07/2017
CHECK'D	SN
DATE	31/07/2017

SCALE
N.T.S.



ROBAND

DRG. REF.

AF813

REV

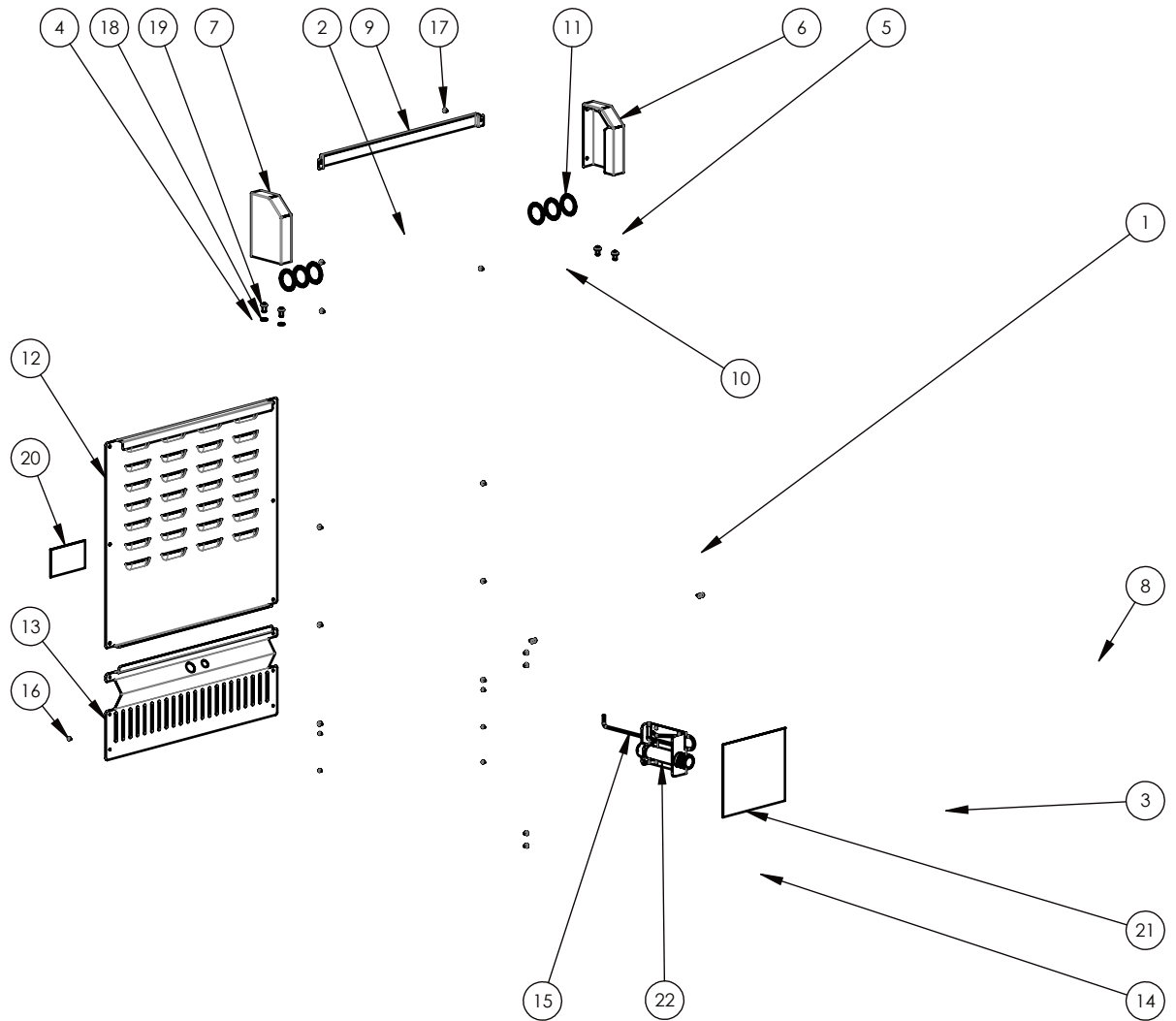
LAST ISSUE: 19/06/2019

SHEET 1 OF 4

MATERIAL: AS PER PARTS

S:\SolidworksModels\Austheat Products\Fryers\AF813\AF813ver6-Draw-1
LAST SAVED: Thursday, 18 June 2020 3:17:49 PM, by paul.levasseur

ITEM NO.	PART NUMBER	DESCRIPTION	QTY
1	VS0140	Body Assembly	1
2	VS0124	Element Box Complete	1
3	SS1972	Door Assembly	1
4	SS1681	LH Element Box Hinge Assembly	1
5	SS1682	RH Element Box Hinge Assembly	1
6	SS3153	RH Element Box Hinge Cover	1
7	SS3152	LH Element Box Hinge Cover	1
8	VS0228	Front Panel Assembly & Glass	1
9	SS1766	Swing Stop	1
10	SS1768	Latch Assembly	1
11	SS1807	Washer - Ø52.5mm OD x Ø39mm ID	6
12	SS1977	Back Panel	1
13	SS1978	Lower Back Panel	1
14	NS0001	Rating Plate Assembly - Plain	1
15	MC0074	Lifter - Donut	1
16	MC0284	Rivet - 73MS 4-2 Truss Head	6
17	MC0062	Screw - 8G x 3/8" self tapper, hardened, Torx	18
18	MC0667	Washer - Spring M8 Zn Plated	4
19	MC0663	M8 x 16mm Button Head S Steel	4
20	NC0079	Label - Colourbond Disconnection Warning	1
21	NC0088	Label - Polyester Lifting Instructions	1
22	MC1892	Drain Pipe	1

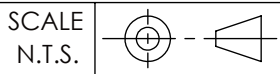


DO NOT SCALE.
UNLESS OTHERWISE NOTED:
DIMENSIONS ARE IN mm.
ALL FOLD DIMENSIONS
SHOWN ARE INSIDE SIZES.

AUSTHEAT 800 SERIES FRYER

VERSION #:
V6

DRAWN	SN
DATE	31/07/2017
CHECK'D	SN
DATE	31/07/2017



TOLERANCES:
LINEAR: +/-0.5mm
ANGULAR: +/-1.0°

DRG. REF.

AF813

REV

LAST ISSUE: 19/06/2019

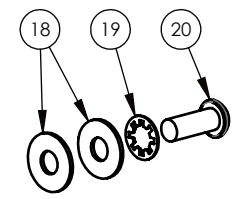
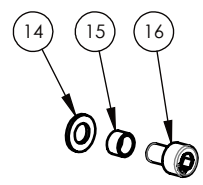
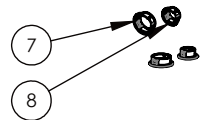
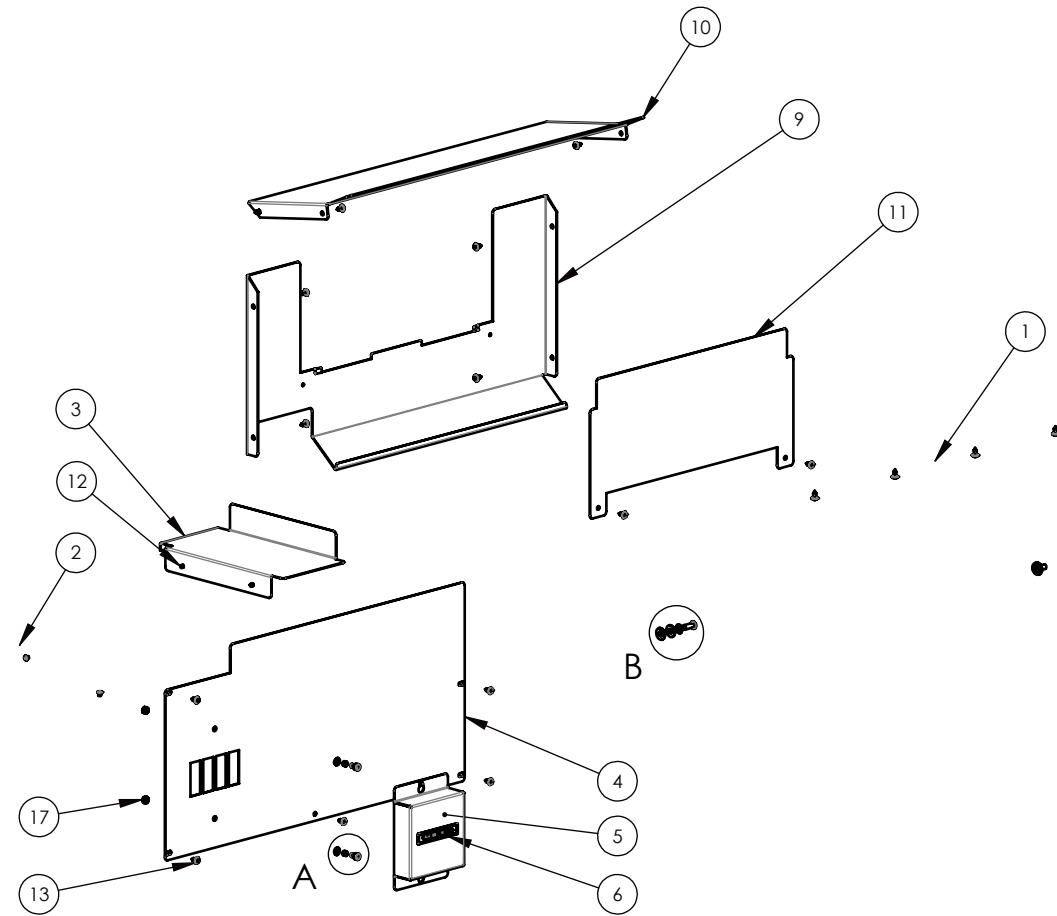
SHEET 2 OF 4

ZONE	REV.	DESCRIPTION	DATE	CHG BY
D3	A	Item 22 Drain Pipe added control panel changed for etching and brushed chrome knobs	20/05/2020	PELV

MATERIAL: AS PER PARTS

S:\SolidworksModels\Austheat Products\Fryers\AF813\AF813ver6-Draw-1
LAST SAVED: Thursday, 18 June 2020 3:17:49 PM, by paul.levasseur

ITEM NO.	PART NUMBER	DESCRIPTION	QTY
1	VS0141	Control Panel Complete	1
2	VS0142	Electrical Box Assembly	1
3	SS1884	Wire Guide	1
4	SS1979	Electrical Box Cover	1
5	SS1888	Circuit Breaker Cover	1
6	NC0087	Circuit Breaker Label	1
7	PC0288	1" Plastic Plug	2
8	PC0287	0.75" Plastic Plug	2
9	SS1980	Front Baffle	1
10	SS1981	Front Top Baffle	1
11	SS1899	Capillary Retainer	1
12	MC0284	Rivet - 73MS 4-2 Truss Head	9
13	MC0062	Screw - 8G x 3/8" self tapper, hardened, Torx	19
14	MC0702	Washer - M5 x 10mm OD x 1mm - SS Flat	2
15	MS0081	Sleeve - 6.35mm Dia	2
16	MC0547	M5 x 8 Socket Head Cap Screw SS	2
17	MC0699	Nut - M5 Stainless	2
18	MC0602	Washer - 1/4" x 5/8" OD x 1mm - SS Flat	4
19	MC0902	Washer - M6 Shakeproof ZP	2
20	MC0405	Screw M6 x 16 Button Head Socket SS	2



DETAIL A
SCALE 1 : 2

DETAIL B
SCALE 1 : 2

DO NOT SCALE. UNLESS OTHERWISE NOTED: DIMENSIONS ARE IN mm. ALL FOLD DIMENSIONS SHOWN ARE INSIDE SIZES.				AUSTHEAT 800 SERIES FRYER		VERSION #: V6	
DRAWN	SN	SCALE					
DATE	31/07/2017	N.T.S.					
CHECK'D	SN	DRG. REF.	AF813		REV	LAST ISSUE: 19/06/2019	
DATE	31/07/2017					SHEET 3 OF 4	

MATERIAL: AS PER PARTS

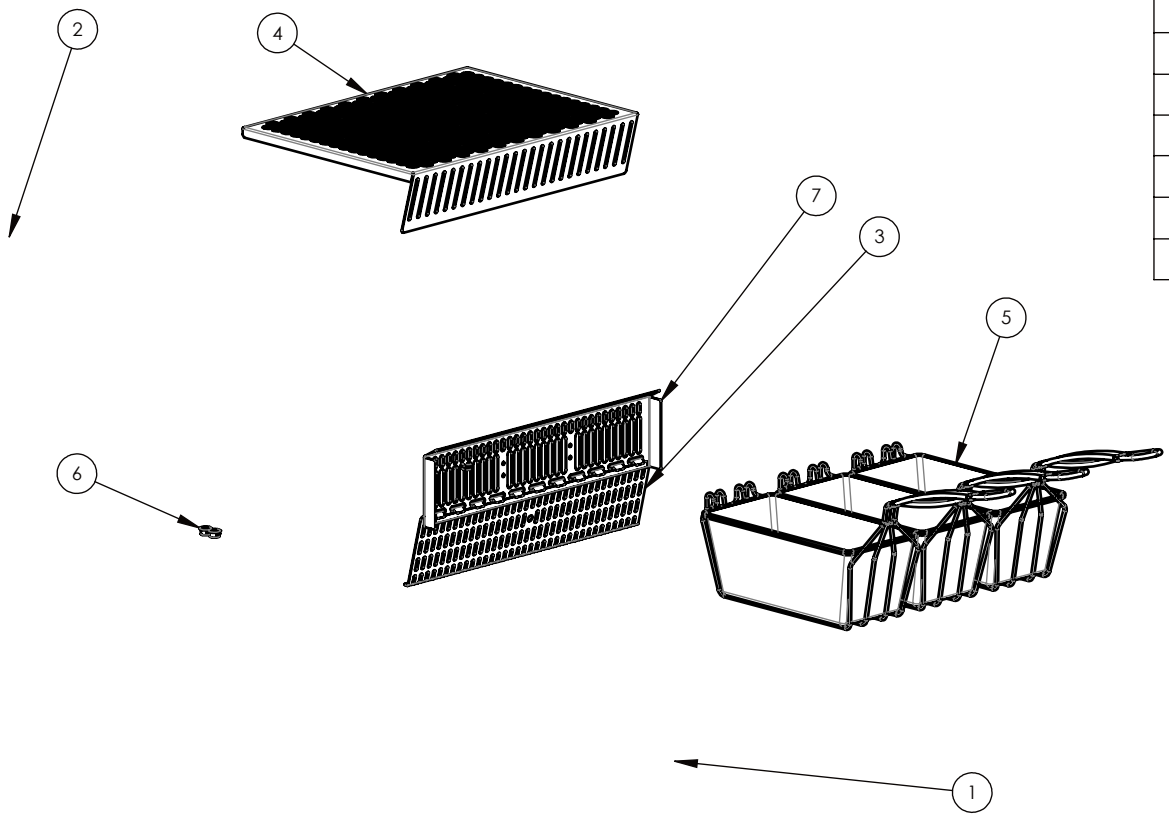
S:\SolidworksModels\Austheat Products\Fryers\AF813\AF813ver6-Draw-1
LAST SAVED: Thursday, 18 June 2020 3:17:49 PM, by paul.levasseur

1

2

3

4



ITEM NO.	PART NUMBER	DESCRIPTION	QTY
1	SS1985	Tank Assembly	1
2	SS1832	Lid Assembly	1
3	SS1983	Strainer	1
4	SS1984	Fish Plate	1
5	MC0611	Basket - Large Fryer	3
6	PC0072	Bush Nylon Ø5-8 Inch	3
7	SS1982	Bulb Guard	1

A

B

C

D

DO NOT SCALE.
UNLESS OTHERWISE NOTED:
DIMENSIONS ARE IN mm.
ALL FOLD DIMENSIONS
SHOWN ARE INSIDE SIZES.

TOLERANCES:
LINEAR: +/-0.5mm
ANGULAR: +/-1.0°

AUSTHEAT 800 SERIES FRYER VERSION #:
V6

DRAWN	SN
DATE	31/07/2017
CHECK'D	SN
DATE	31/07/2017

SCALE
N.T.S.

ROBAND

DRG. REF. **AF813**

REV	LAST ISSUE: 19/06/2019
SHEET 4 OF 4	

MATERIAL: AS PER PARTS

S:\SolidworksModels\Austheat Products\Fryers\AF813\AF813ver6-Draw-1
LAST SAVED: Thursday, 18 June 2020 3:17:49 PM, by paul.levasseur

1

2

3

4