

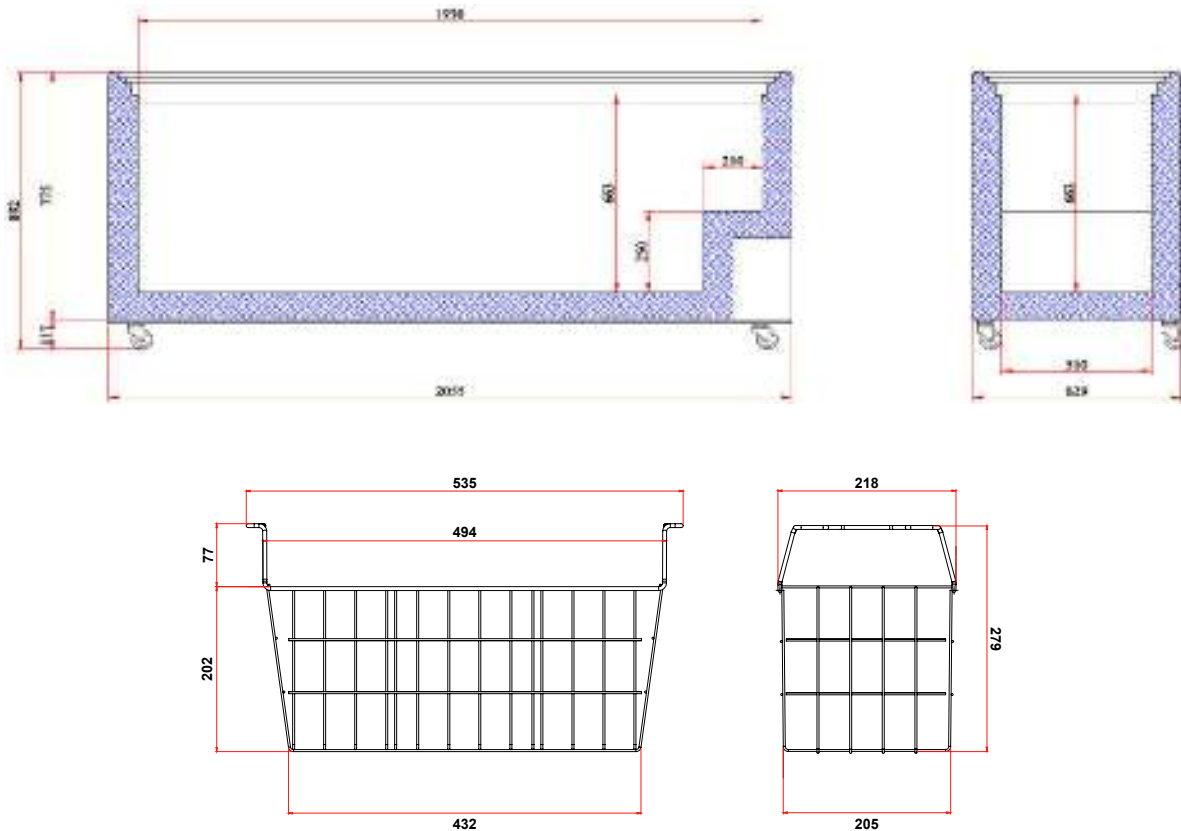
# Display Chest Freezer 670L - Flat Glass Top

| Chest Freezers



# Display Chest Freezer 670L - Flat Glass Top

| Chest Freezers



SPECIFICATIONS				DIMENSIONS	
Model Number	CF0700FTFG-NR	Plug Plug	1 x 10A	<b>External (mm)</b>	
Part Number	3735305-NR	Cord Length	2m	<b>Width</b>	2055
Volume	670L	Plug Location	Rear, bottom right	<b>Depth</b>	629
Unit Weight	120kg	Colour	White	<b>Height</b>	892
Packaged Weight	125kg	Internal Light	No	<b>Internal (mm)</b>	
Adjustable Temp. Range	-22°C to -12°C	No. of Lids	2	<b>Width</b>	1930
Max. Ambient Temp.	35°C	Lid Type	Glass	<b>Depth</b>	510
Climate Class	4L1	Lid Shape	Flat	<b>Height</b>	663
Energy Consumption	3.57kWh/24h	Lid Style	Sliding	<b>Packaged (mm)</b>	
GEMS Star Rating	7 Stars	Lid Lock	Yes	<b>Width</b>	2095
Refrigeration Capacity	440W	No. of Baskets	8	<b>Depth</b>	680
Refrigerant	R290	Basket Dimensions	205(w) x 432(d) x 202(h) mm	<b>Height</b>	950
Air Circulation	Static	Defrost System	Manual		
Rated Current	1.73A	Temp. Controller	Analogue controller, digital display		
Electrical Voltage	220-240V	Castors	Yes		
Frequency	50Hz	Warranty	5 Years Bromic Extra Care Warranty - Parts and Labour		
Power Supply	Single Phase				