



PLUG-IN POWER



eptarefrigeration

# DELTA



Frozen food



Static



Manual  
defrost



Ventilated



Compressor  
Hermetic  
Reciprocating



Incorporated  
condensing  
unit



[www.iarp-plugin.com](http://www.iarp-plugin.com)



**PLUG-IN POWER**

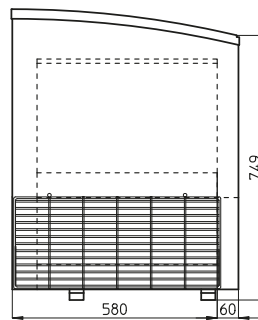
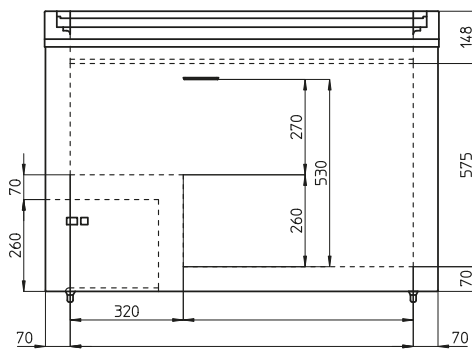


**eptarefrigeration**

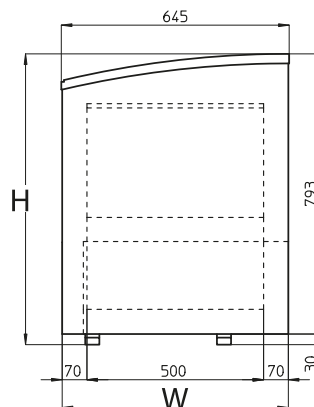
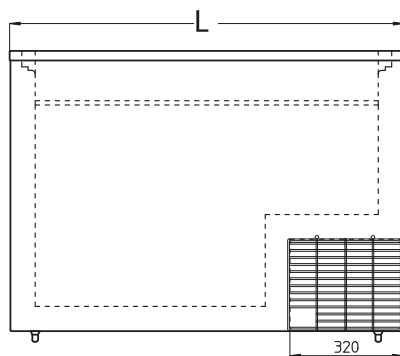
## TECHNICAL DETAILS



Model	Dimensions L x W x H	Volume in litres Gross	Volume in litres Net	Operating temperature	Energy consumption Kwh/24h	Q.ty on 20' container	Q.ty on 40' container	Q.ty on 40' HQ container	Packaging L x W x H
Delta 725	909x645x818	231	167	-25/-15° C	1,86	38	72	108	970x720x845
Delta 732	1009x645x818	261	194	-25/-15° C	1,37	32	68	102	1080x720x845
Delta 735	1184x645x818	330	242	-25/-15° C	1,62	26	54	81	1260x720x845
Delta 745	1388x645x818	402	298	-25/-15° C	2,5	24	48	72	1460x720x845
Delta 755	1625x645x818	487	362	-25/-15° C	2,92	20	40	60	1710x720x845



Cooling system	Static
Refrigerant gas	R404a/R290/R507
Defrost system	Manual



## ACCESSORIES



	STD	OPT
Customized graphic		●
Lock system	●	
Basket dividers		●
Digital thermometer		●