

SINGLE PAN ELECTRIC PASTA COOKER 450mm

E47, E47-7

- High performance single pan pasta cooker
E47 10.5kW 3 phase
E47-7 7.0kW 1 phase
- Heavy-duty 3 coil Incoloy 825 element
- Easy clean 316 grade stainless steel open pan
- 40L water capacity
- Integrated water fill and starch skimming water faucet
- Six stainless steel pasta baskets supplied
- Hinged basket drain stand
- Safety cut-out thermostat for empty pan/water boil out
- Stainless steel exterior
- Easy clean
- Easy service
- Fully modular



E47

Overall Construction

- Pan 1.5mm 316 stainless steel
- Bull nose welded 1.5mm stainless steel
- Splashback 1.2mm stainless steel
- Side panels 1.2mm stainless steel
- Double skin door with 0.9mm stainless exterior
- 25mm (1") skimming overflow and pan drains drain valve
- 63mm dia. heavy-duty 1.2mm stainless steel legs with adjustable feet
- 6 stainless steel baskets with moulded handles
- Stainless steel wire basket support grid in pan

Controls

- Large easy to use knob - heat resistant reinforced
- 3 power settings (boil-simmer-standby)
- Mechanical thermostat
- Thermostat range 30°C - 110°C
- Fail safe over-temperature safety cut-out
- Element tilt switch for heating cut-out
- Indicator lights for power & heating
- Fine adjustment water faucet for pan filling and water refreshing/ starch skimming

Cleaning and Servicing

- Open stainless steel pan for easy clean
- Hinged basket drain stand
- Removable basket support grid
- 25mm (1") drain valve for effective draining
- Easy clean stainless steel exterior
- Access to all parts from front of unit

SINGLE PAN ELECTRIC PASTA COOKER 450mm

E47, E47-7

Specifications

Pan Size

Water capacity 40L
Width 365mm
Length 405mm
Basket immersion depth 165mm

Baskets

6 stainless steel perforated baskets with moulded plastic handles 125mm x 165mm x 180mm deep
Stainless steel wire basket support grid

Elements

1 x 10.5kW Incoloy 825 heating element (E47)
1 x 7.0kW Incoloy 825 heating element (E47-7)

Electrical Requirements

E47

10.5kW, 400-415V, 50/60Hz, 3P+N+E
L1 14.6A
L2 14.6A
L3 14.6A

E47-7

7.0kW, 220-240V, 50/60Hz, 1P+N+E
L1 29.2A

Electrical Connection

56mm from RH side, 541mm from rear and 489mm from floor

Water Connection

Cold water connection 50mm from left hand side, 556mm from rear and 150mm from floor
R¹/₂ (BSP) male
550kPa 80psi maximum water pressure

Drain Connection

Drain must be connected to system suitable for boiling water discharge
1" BSP Male connection 118mm from left hand side, 470mm from rear, and 170mm from floor

Dimensions

Width 450mm
Depth 812mm
Height 915mm
Incl. splashback 1085mm

Nett weight

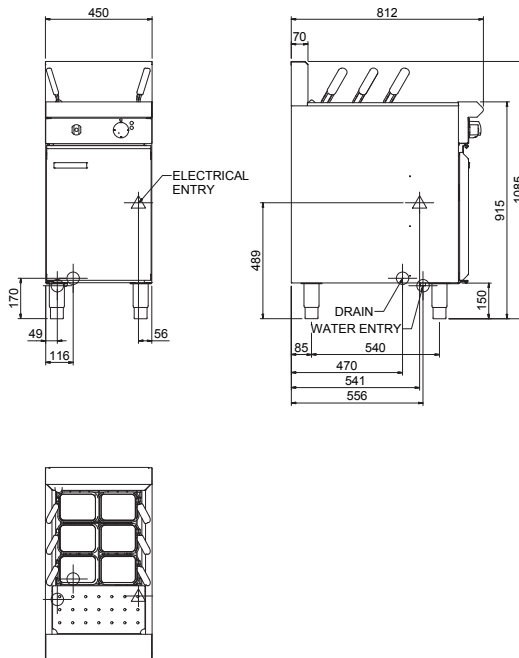
78kg

Packing data

0.54m³, 120kg
Width 870mm
Depth 495mm
Height 1255mm

Options

Rectangular baskets 320mm x 165mm x 180mm deep
Square baskets 165mm square x 180mm deep
Side splash guards
Joining caps



moffat.com.au
moffat.co.nz

Australia
moffat.com.au

Moffat Pty Limited

Victoria/Tasmania
740 Springvale Road
Mulgrave, Victoria 3170
Telephone +613-9518 3888
Facsimile +613-9518 3833
vsales@moffat.com.au

New South Wales
Telephone +612-8833 4111
nswsales@moffat.com.au
South Australia
Telephone +613-9518 3888
vsales@moffat.com.au

Queensland
Telephone +617-3630 8600
qldsals@moffat.com.au

Western Australia
Telephone +618-9413 2400
wasales@moffat.com.au

New Zealand

moffat.co.nz

Moffat Limited

Rolleston
45 Illinois Drive
Izone Business Hub
Rolleston 7675
Telephone +64 3-983 6600
Facsimile +64 3-983 6660
sales@moffat.co.nz

Auckland
Telephone +64 9-574 3150
sales@moffat.co.nz



In line with policy to continually develop and improve its products, Moffat Limited reserves the right to change specifications and design without notice.

© Copyright Moffat Ltd
AN.BSE.02.19/1620