

Curved Glass Display Chest Freezers

Features:

- Analog temperature display and controller
- Static cooling system
- Sliding curved glass doors with lock
- Removable rubber bumper on the engine side (30mm) for ventilation purpose
- Frequency/voltage: 50Hz/220-240 V
- Castor wheels

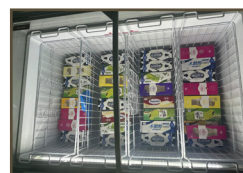
- Plastic coated steel baskets
- Powder coated steel exterior dan interior
- 70 mm thick insulation
- Refrigerant: R290
- Ambient temperatures from +16°C to +38°C



SD151



NEW WITH
LED INTERNAL
LIGHT



LED internal light

Gross volume: 151 L

Exterior dimensions in mm: 584w x 694d x 850h

Number of baskets: 2

Temperature set range: ≤-18°C

Gross/net weight: 55/48 kg

Energy consumption in 24h: 1.6 kWh

SD235K



NEW
PRODUCT

NEW WITH
LED INTERNAL
LIGHT



LED internal light

Gross volume: 210 L

Exterior dimensions in mm: 800w x 694d x 850h

Number of baskets: 3

Temperature set range: ≤-18°C

Gross/net weight: 60/52 kg

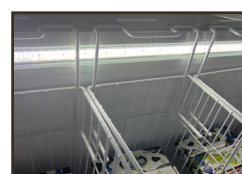
Energy consumption in 24h: 1.59 kWh

SD300



NEW
PRODUCT

NEW WITH
LED INTERNAL
LIGHT



LED internal light

Gross volume: 285 L

Exterior dimensions in mm: 1000w x 694d x 850h

Number of baskets: 4

Temperature set range: ≤-18°C

Gross/net weight: 68/60 kg

Energy consumption in 24h: 2.6 kWh