

### FDAEP318RD

PROJECT \_\_\_\_\_

ITEM \_\_\_\_\_

QUANTITY \_\_\_\_\_

DATE \_\_\_\_\_



The Anets Platinum electric series offers variety of high performance fryers. Anets electric fryers are fitted with fast recovery fixed heating elements to ensure ongoing safety throughout operation.

All electric fryers can be used with an inbuilt frying system. Simply specify the combination you require and your Stoddart representative will price for you accordingly.

#### FEATURES & BENEFITS:

- Platinum series electric, filter systems come with the AEP18R fryers banked together
- Digital or computer controlled 3 fryer filter drawer system
- Fixed immersed heating element design
- Easy two step filtering
- 30 litre per minute filter pump for fast refill times
- Self aligning filter connection for effortless hookup
- Rear oil return for bottom cleaning
- Filter pan is stainless with rear wheels for easy handling
- Filter pan lid is self storing and out of the way
- All filtration systems come standard on adjustable height castors, Washdown/discharge hose, Box of 100 envelope papers, Starter sample pack of filter powder, Lids, Clean out rod and brush

#### TECHNICAL DATA:

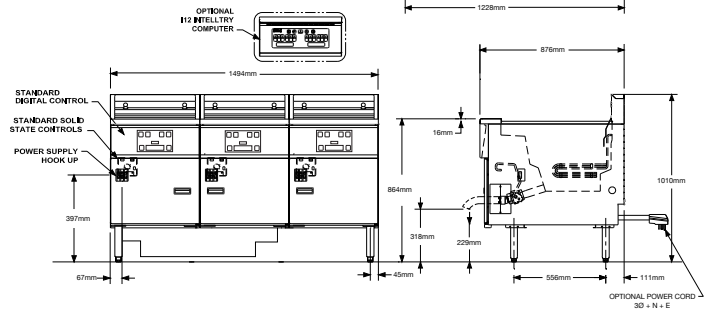
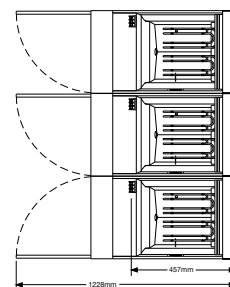
Dimensions (W x D x H):	1494 x 876 x 1010
Total Weight:	309 Kg
Cooking Area (W x D x H):	457 x 457 x 121mm (x3)
Oil Capacity:	32-41 Litres per tank

Electrical Connection	66kW
	3Ø + N + E

#### OPTIONAL EXTRAS:

- 12 program computer control

**NOTE:** 22 kW individual connection to each filter.



Due to continuous product research and development, the information contained herein is subject to change without notice.

Revision: 16/7/2020

[www.stoddart.com.au](http://www.stoddart.com.au)

[www.stoddart.co.nz](http://www.stoddart.co.nz)