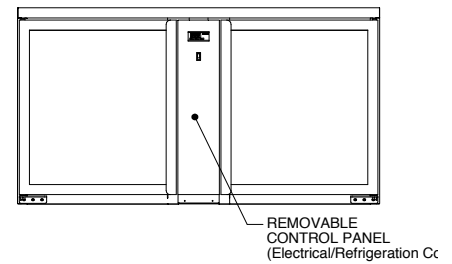
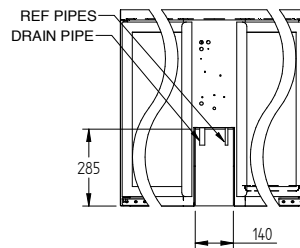
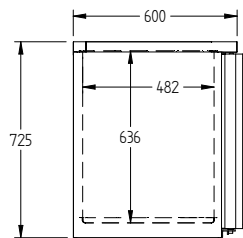
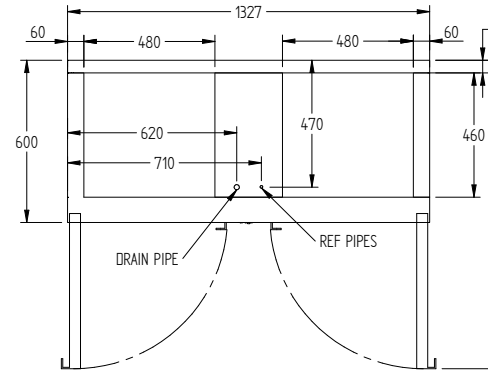
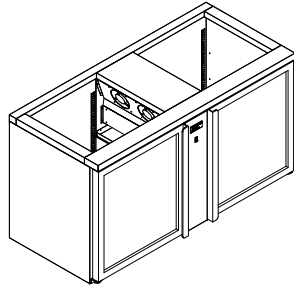


GC2RGD



| | |
|----------|------------------------------|
| CATEGORY | GENERAL COUNTERS & BACK BARS |
| RANGE | Glass Chiller |
| UNIT | REFRIGERATOR |
| TYPE | REMOTE |
| DOORS | 2 |



SPECIFICATIONS

| | |
|--|------------------------|
| CAPACITY - BASKETS/DOOR (NOT INCLUDED) | 4 Baskets |
| TEMPERATURE | 1°C / 4°C |
| SHELF LOAD | YES |
| DIMENSIONS - W X D X H (ON LEGS) MM | 1327 W x 600 D x 875 H |
| WEIGHT UNPACKED (KG) | 100 |

STANDARD INCLUSIONS ***

| | |
|---|---------------------------|
| DOOR TYPE | Standard: GD (Glass Door) |
| FINISH (INTERIOR AND EXTERIOR EXCLUDING REAR AND UNDER) | SS (Stainless Steel) |
| SHELVES/DOOR - SHELF LOAD MODEL ONLY | 2 |

ELECTRICAL

| | | |
|---------------|--------------|-----|
| POWER SUPPLY | 10 amp | |
| FRIDGE MODELS | RUNNING AMPS | 0.5 |

GAS TYPE

| | |
|-------------|-------|
| REFRIGERANT | R404a |
|-------------|-------|

REFRIGERATION WATTAGES FOR REMOTE UNITS

| | |
|-----------------|-----------------|
| REMOTE WATTAGES | 750 @ -5° C SST |
|-----------------|-----------------|

*** For **OPTIONS** refer to the current Williams Price Guide