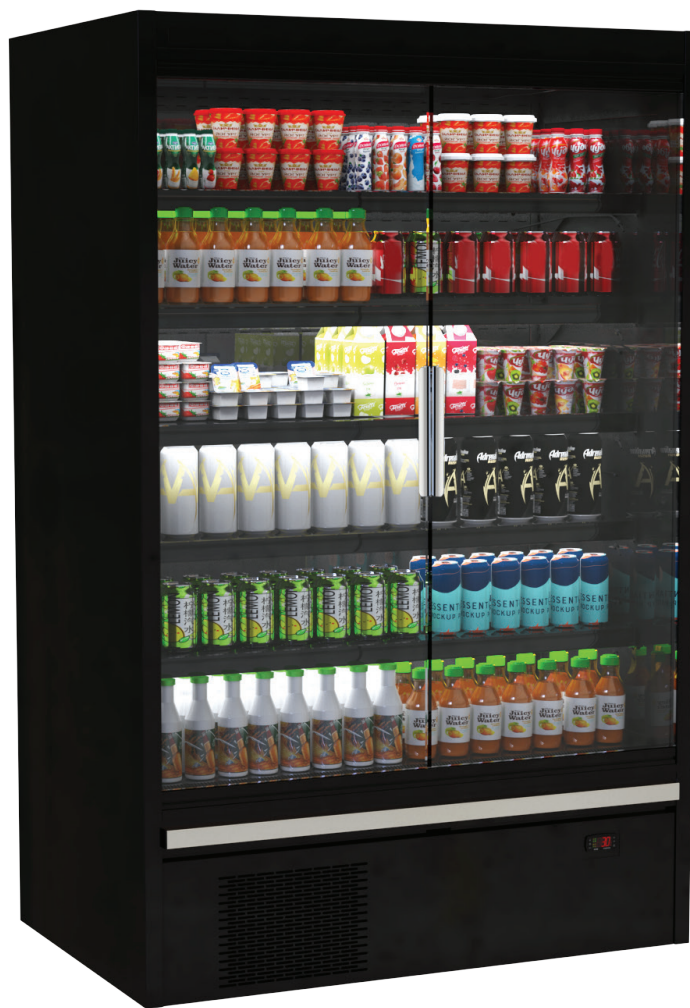


SELF-CONTAINED

H2TMDS

MULTIDECK DOOR - CHILLER CABINET



ENHANCED ENERGY EFFICIENCY
& VERSATILITY

HUSSmann[®]



PRODUCT BENEFITS

- Ergonomic design for easy product access
- Adjustable shelving options to optimise merchandising
- Optimised display with LED lighting
- Product temperature compliance
- Easy plug-in on-site installation

STANDARD FEATURES

- Durable internal and external powder coat finish
- Single row of 4000K LED canopy lighting
- Undershelf 4000K LED lighting
- 5 rows of 450mm powder coated unlit shelves plus 525mm base
- Ticket strips
- Air return grill
- Long life galvanized internal base
- Solid mirror ends
- Stainless steel bumper
- Adjustable feet
- Evaporative condensate removal
- EC fan motors
- Digital controller with temperature display

CUSTOMISATIONS

SHELVING & BASE SHELF

- Optional additional shelves and brackets
- Acrylic 25mm shelf fence

LIGHTING

- LED under-shelf lighting

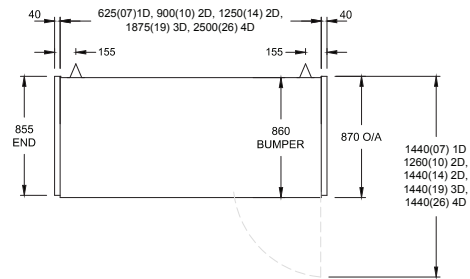
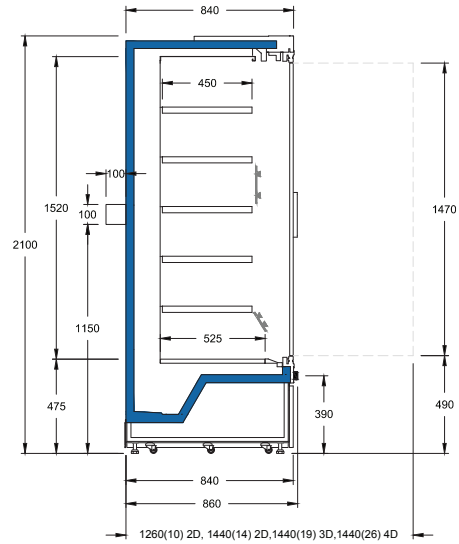
ENDS

- Glass view ends

OTHER

TECHNOLOGY SOLUTIONS

- Electronic shelf labels or video rail
- 35mm Castors (Not Lockable)



| TECHNICAL DATA | | | | | |
|--------------------------------|-----------|-----------|-----------|-----------|-----------|
| Model (H2TMDS) | H2TMDS-07 | H2TMDS-10 | H2TMDS-14 | H2TMDS-19 | H2TMDS-26 |
| Number of Doors | 1 | 2 | 2 | 3 | 4 |
| Depth (mm) | 860 | | | | |
| Height (mm) | 2100 | | | | |
| Length w/o ends (mm) | 625 | 900 | 1250 | 1875 | 2500 |
| Length with ends (mm) | 705 | 980 | 1330 | 1955 | 2580 |
| Net Volume (L) | 367 | 529 | 735 | 1102 | 1469 |
| Gross Volume (L) | 615 | 885 | 1229 | 1844 | 2459 |
| Display Area (m ²) | 0.811 | 1.607 | 1.918 | 2.469 | 3.317 |
| Amperes (amps) | 10 | 10 | 10 | 10 | 20 |

AVAILABLE COLOURS



TEMPERATURE CLASS

3M1

(+1 °C to +5 °C)



Additional Information

All Dimensions shown in Millimetres (mm) unless otherwise stated. Dimensions and features are subject to change. Please obtain current technical information prior to order confirmation.

NOTE: We reserve the right to change or revise specifications and product design in connection with any feature of our products. Such changes do not entitle the buyer to corresponding changes, improvements, additions or replacements for equipment previously sold or Shipped.

Australia Head Office

66 Glendenning Road Glendenning, NSW 2761 Australia

ph. +612 8805 0400

w. hussmann.com.au

