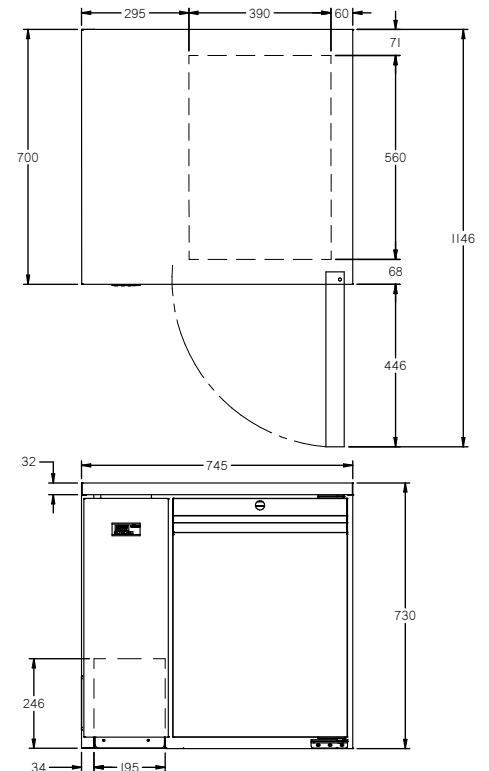
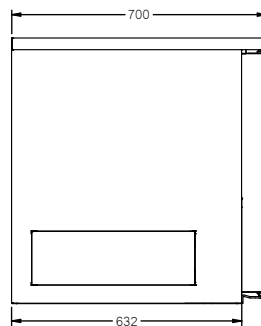


LO1RSS



CATEGORY	FOODSERVICE COUNTERS
RANGE	Opal
UNIT	FREEZER
TYPE	REMOTE
DOORS	1



SPECIFICATIONS

CAPACITY LITRES	190
TEMPERATURE	-18°C / -22°C
DIMENSIONS - W X D X H (ON 150 MM H LEGS)	745 W x 700 D x 880 H
WEIGHT UNPACKED (KG)	90

STANDARD INCLUSIONS ***

DOOR TYPE	Standard: SD (Solid Door) Optional: DR (Drawer)
FINISH (INTERIOR AND EXTERIOR EXCLUDING REAR AND UNDER)	SS (Stainless Steel)
SHELVES/DOOR	2

ELECTRICAL

POWER SUPPLY	10 amp
POWER CABLE LENGTH (METRES)	2
RUNNING AMPS	2.2

GAS TYPE

REFRIGERANT	R404a
-------------	-------

REFRIGERATION WATTAGES FOR REMOTE UNITS

FREEZER - SOLID DOOR	320 @ -30°C SST
----------------------	-----------------

*** For **OPTIONS** refer to the current Williams Price Guide