

Flat Glass Display Chest Freezers

Features:

- Analog temperature display and controller
- Static cooling system
- Sliding flat glass doors with lock
- Removable rubber bumper on the engine side (30mm) for ventilation purpose
- Frequency/voltage: 50Hz/220-240 V
- Plastic coated steel baskets
- Castor wheels
- Powder coated steel exterior dan interior
- 70 mm thick insulation
- Ambient temperatures from +16°C to +38°C

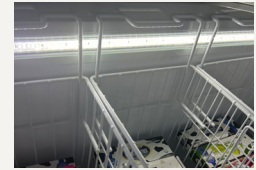


SD117



NEW
PRODUCT

NEW WITH
LED INTERNAL
LIGHT



LED internal light

Gross volume: 117 L

Exterior dimensions in mm: 735w x 485d x 820h

Number of baskets: 3

Refrigerant: R290

Temperature set range: ≤-18°C

Gross/net weight: 43/38 kg

Energy consumption in 24h: 1.42 kWh

SD450



Gross volume: 390 L

Exterior dimensions in mm: 1314w x 694d x 830h

Number of baskets: 4

Refrigerant: R134a

Temperature set range: ≤-18°C

Gross/net weight: 81/73 kg

Energy consumption in 24h: 3.25 kWh

SD650



Gross volume: 566 L

Exterior dimensions in mm: 1799w x 694d x 830h

Number of baskets: 6

Refrigerant: R404a

Temperature set range: ≤-18°C

Gross/net weight: 99/89 kg

Energy consumption in 24h: 4.6 kWh