



HOSHIZAKI REFRIGERATION

RTE Series Counter Refrigerators

Product Features

- Operating ambient 5°C to 43°C (tropical conditions)
- Cabinet temperature microprocessor controlled and adjustable from -6°C to 12°C
- DC evaporator fans, 80% more energy efficient than AC fans
- 150mm legs
- User-friendly controller - control panel with digital thermometer/thermostat for accurate control and easy reading
- Stainless Steel interior and exterior
- Hygienic design - stainless interior and base with rounded edges for easy cleaning and removable door gaskets for easy cleaning
- GASTRONORM specification standard
- Integral Refrigeration
- Standard with 2 shelves and fully adjustable
- Easily accessible, cleanable air filter reduces costly service calls
- 2 years parts and labour warranty (excluding door and exterior damage)



RTE-170SDA-GN



RTE-120SDA-GN

Range

- RTE-120SDA-GN
- RTE-170SDA-GN





Combining low cost of ownership with premium reliability

Hoshizaki refrigeration products are designed for professional kitchens who demand a reliable easy to maintain product with a low cost of ownership.



Easy Cleaning

Removable door gaskets for easy cleaning without the need for tools



Adjustable Shelves

The counter offers one height adjustable shelf per section as standard



Hygienic Design

Dished stainless interior and base with rounded edges for easy cleaning



User friendly controller

Control panel with digital thermometer / thermostat for accurate control and easy reading. A transparent plastic cover protects against accidental adjustment of temperature and fluid spillage.



Easy Service

A compact slide out refrigeration unit for easy maintenance and service access.



Easy Maintenance

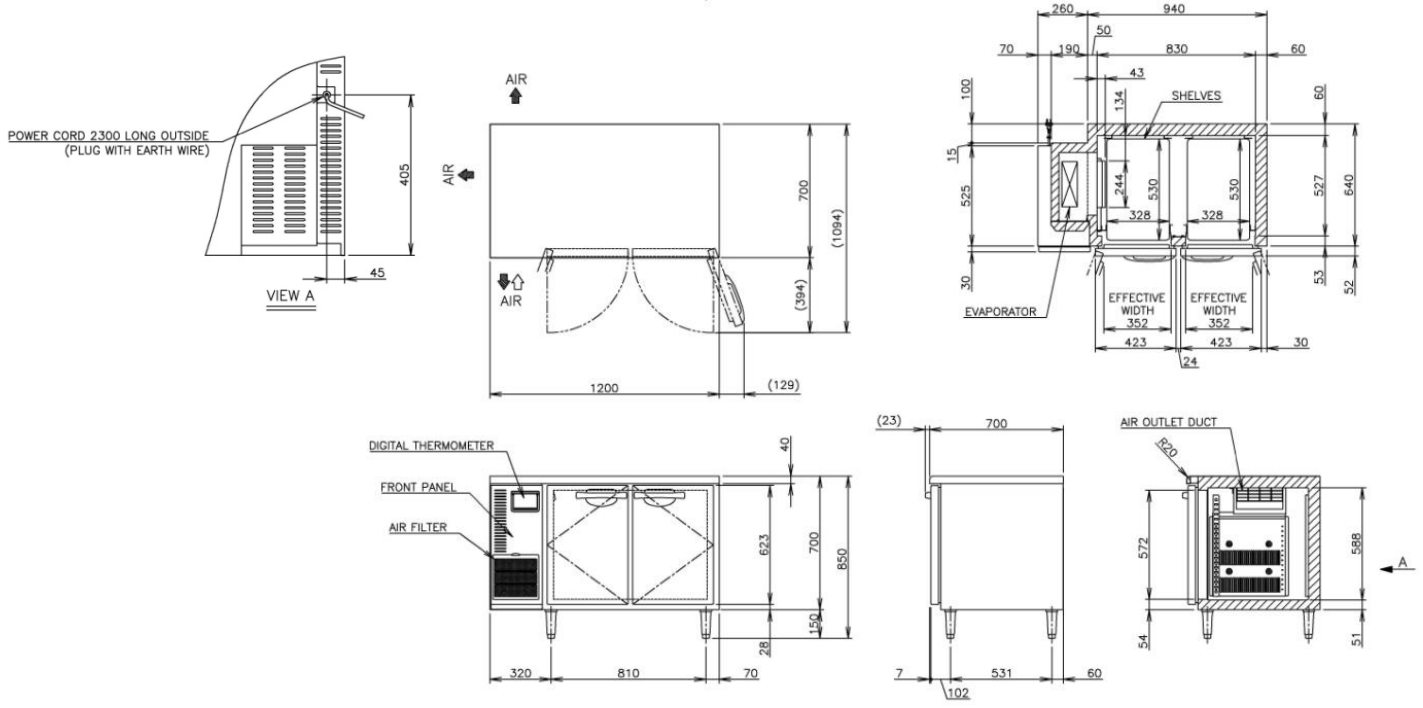
Easy access to front loaded air filter for cleaning.

RTE Series Counter Refrigerators

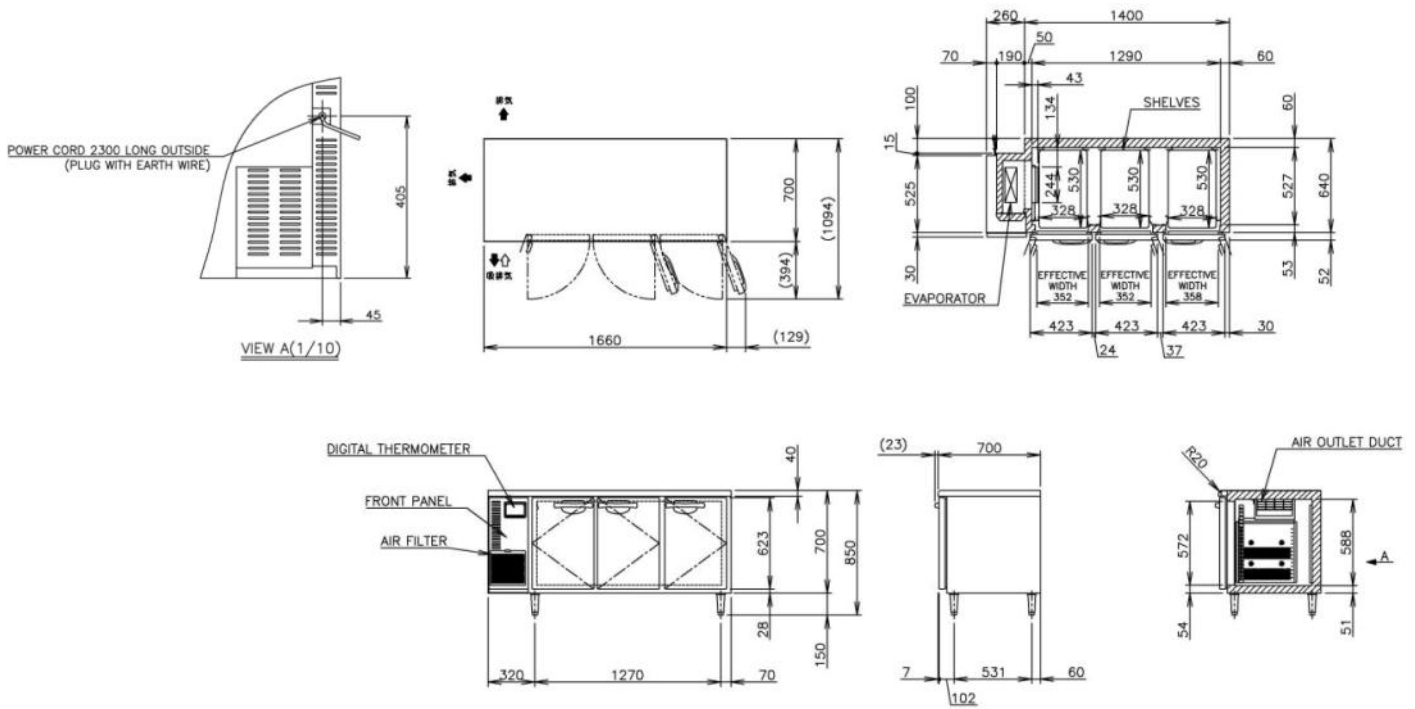


HOSHIZAKI
REFRIGERATION

RTE-120SDA-GN



RTE-170SDA-GN





Product Specifications

MODEL	RTE-120SDA-GN	RTE-170SDA-GN
AC SUPPLY VOLTAGE	220-240V/50Hz/1 phase	220-240V/50Hz/1 phase
AMPERAGE	1.4A	1.4A
STARTING AMPERAGE	6.8A	6.8A
INSIDE DIMENSIONS (W X D X H)	830 x 527 x 588mm	1290 x 527 x 588mm
OUTSIDE DIMENSIONS (W X D X H)	1200 x 700 x 850 (850-880)mm	1660 x 700 x 850 (850-880)mm
EFFECTIVE CAPACITY	265 L	412 L
DEFROST SYSTEM	Heater	Heater
REFRIGERANT	R134a	R134a
DOOR/SHELF	2 Door/2 Shelf	3 Door/3 Shelf
TEMPERATURE CONTROL	Microprocessor controlled (Adjustable from -6°C to 12°C)	Microprocessor controlled (Adjustable from -6°C to 12°C)
EXTERIOR	Stainless Steel, Galvanised Steel (Rear/Bottom)	Stainless Steel, Galvanised Steel (Rear/Bottom)
INTERIOR	Stainless Steel, ABS Plastic	Stainless Steel, ABS Plastic
OPERATING CONDITIONS (AMBIENT TEMP)	Ambient Temperature 5-43°C	Ambient Temperature 5-43°C
PACKAGE (W X D X H)	1265 x 780 x 850	1725 x 780 x 850
WEIGHT (NET/GROSS)	83kg/93kg	103kg/115kg

