



REFRIGERATION

ISOLA HOT BAIN-MARIE

MOBILE BAIN MARIE



HOT FOOD



BAIN-MARIE



PLUG-IN

FEATURES INCLUDE

- Dark walnut trim
- Stainless steel internal bain-marie
- Overhead heat lamps
- Motorised overhead perspex canopy
- Castor wheels
- Stainless steel tray race (optional)
- Suitable for a variety of gastronorm pans



Scan here to check for Energy Efficiency Rebates in your state.



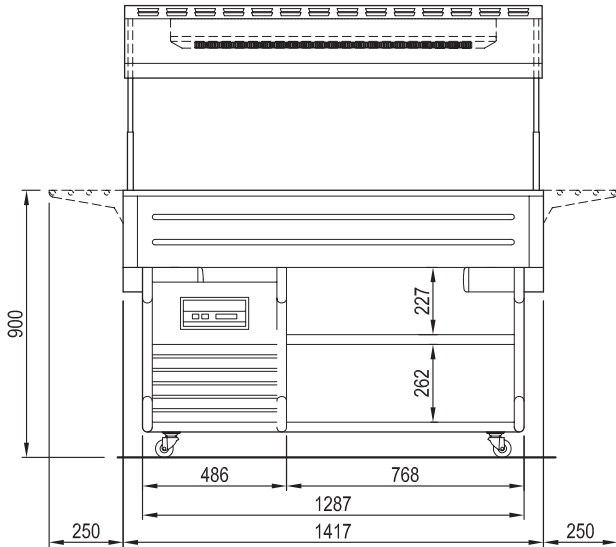
Product image not to scale.



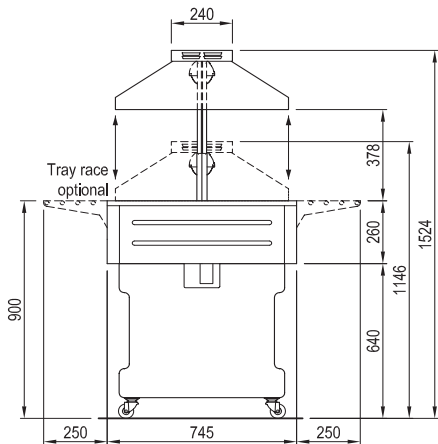
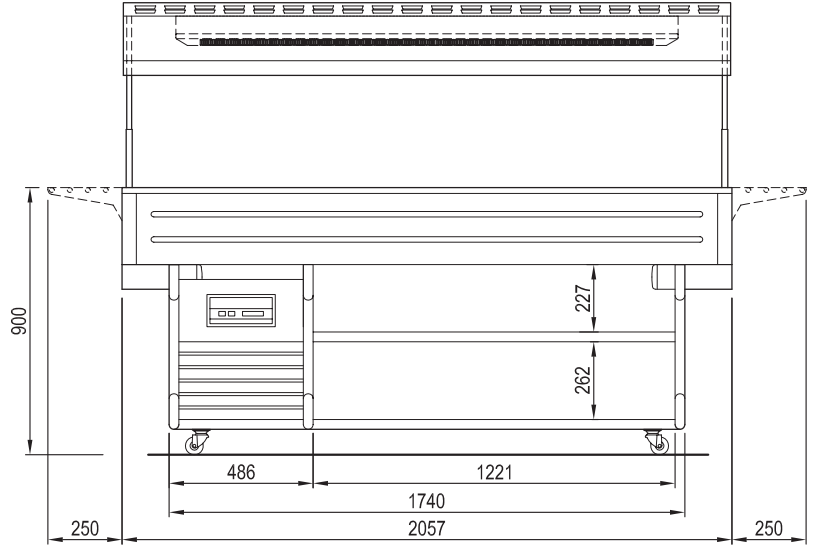
REFRIGERATION

TECFRIGO ISOLA BAIN-MARIE

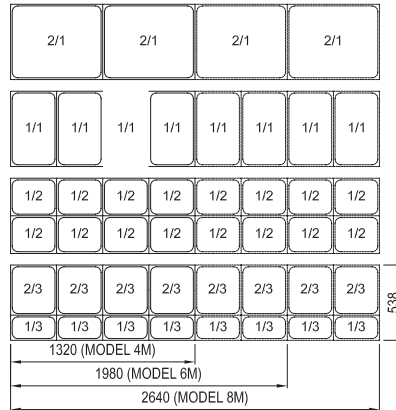
Isola 4M Bain-Marie



Isola 6M Bain Marie



GASTRONORM PANS



| ISOLA BAIN-MARIE | 4M | 6M |
|-------------------------------------|------------------------------|------------------------------|
| OPERATING TEMP (°C) | +30 / +90 | |
| POWER SUPPLY | 230V / 1Ph / 20 Amp plug | 400V / 3Ph / Hard wired |
| OPERATING CURRENT (Amp) | 15.3 | 11.0 |
| NOMINAL POWER (W) | 3500 | 4400 |
| ENERGY CONSUMPTION (kWh/24h) | 63 | 79.2 |
| GASTRONORM PANS (max height 150mm) | 1/4, 1/3, 1/2, 2/3, 1/1, 2/1 | |
| LENGTH (mm) | 1417 (+ 500 with race trays) | 2057 (+ 500 with race trays) |
| TOTAL HEIGHT INCLUDING CASTORS (mm) | 1524 | 1524 |
| DEPTH INCLUDING BUMPER (mm) | 745 (+ 500 with race trays) | 745 (+ 500 with race trays) |
| WEIGHT WITHOUT PACKAGING (kg) | 122 | 131 |

Gastronorm pans not included

PERTH | BRISBANE | SYDNEY | MELBOURNE | ADELAIDE | BUNBURY

RTA: AU10320

