



The Anets Platinum electric series offers variety of high performance fryers. Anets electric fryers are fitted with fast recovery fixed heating elements to ensure ongoing safety throughout operation.

This electric fryer can be used with an inbuilt filtering system. Simply specify the combination you require and your Stoddart representative will price for you accordingly.

Product Information:

- Tank - Stainless steel construction
- Cabinet - Stainless steel front, door & sides
- Fixed immersed heating element design
- 4 channel digital control is standard on all Anets Platinum fryers with melt cycle and boil out modes. Complete with backup solidstate controller which can be switched on should the digital control fail.
- Cooking capacity of approximately 50kg of frozen 10mm fries / 58kg of frozen french cut fries per hour
- Supplied with 3 x 140mm wide nickle plated wire fryer baskets, removable stainless steel basket support, lid, drain pipe extension, clean out rod & brush
- 10 year warranty on stainless steel frypot

OPTIONAL EXTRAS:

- Fish plate alternative
- Capping strips & Splashguards
- 229mm (9") fixed and swivel castors with brakes
- Computer control to substitute digital control
- Heat tape

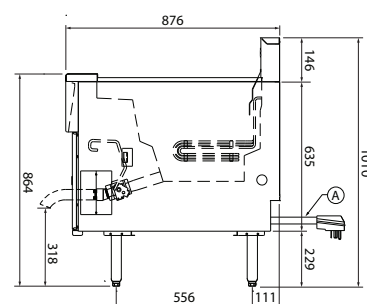
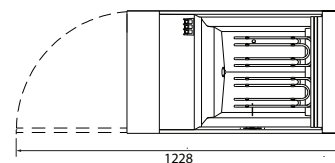
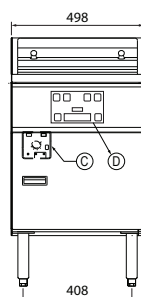
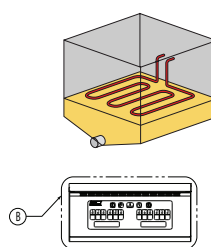
TECHNICAL DATA:

Dimensions (W x D x H):	498 x 876 x 1010
Total Weight:	103 Kg
Cooking Area (W x D x H):	457 x 121 x 457mm
Oil Capacity:	31-39 Litres
Electrical Connection	22kW 3Ø + N + E

Legend:

- A Electrical Connection
- B Computer Control Panel (Optional)
- C Solid State Control
- D Digital Control Panel

NOTE: It is the responsibility of the installing gas plumber to ensure correct supply and connection sustaining appropriate pressure when all appliances are full on.



Due to continuous product research and development, the information contained herein is subject to change without notice.

Revision: B - 2/8/2024 - 02

www.stoddart.com.au
www.stoddart.co.nz