

SERVE OVER BAIN-MARIE COUNTER

FEATURES INCLUDE:

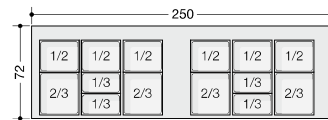
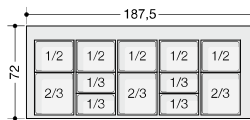
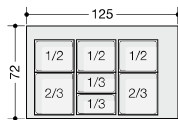
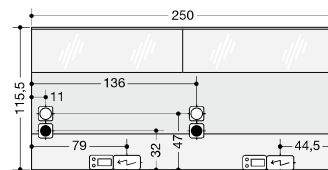
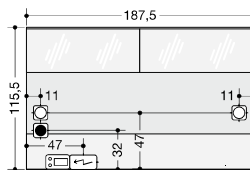
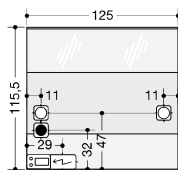
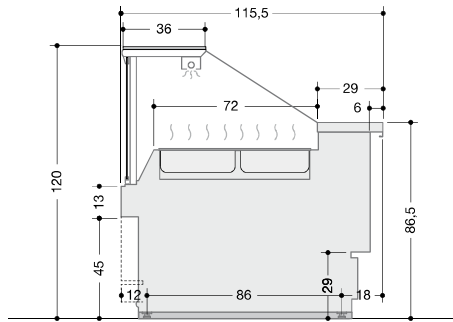
- Flat lift up glass
- Stainless steel internal bain-marie
- Overhead heat lamps
- Rear perspex slides
- Castor wheels (optional)
- Self-service (optional)



Image is being used for illustrative purposes only.

ENIXE 400

SERVE OVER BAIN-MARIE COUNTER



ENIXE 400	1250	1875	2500
* Operating Temp (°C)	+70	+70	+70
Refrigeration	Ventilated/R404a		
Power Supply	400V/3Ph+N+E/hard wire		
Operating Current (amp)	8.5	13.7	17.0
Nominal Power (w)	3400	5500	6800
Energy Consumption (kWh/24h)	61	99	122
Display Area (m ²)	1.00	1.50	2.00
Length (mm) with endwall	1330	1955	2580
Endwall thickness (mm)	40	40	40
Height w/o castors (mm)	1200	1200	1200
Height incl. castors (mm)	1286	1286	1286
Depth w/o bumpers (mm)	1160	1160	1160
Depth w bumpers (mm)	1222	1222	1222
Weight w/o packaging (kg)	160	210	310

* Climate class 3 (25°C, 60%RH)

** ex factory item