

# FLAKE ICE & NUGGET ICE MACHINE

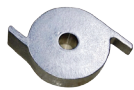
- ✓ 22" SLIM DESIGN
- ✓ ADOPTED SLEEVE BEARING FOR HYGIENE IMPROVEMENT
- ✓ SELECTABLE CHOICE - FLAKE OR NUGGET TYPE



FLAKE TYPE NUGGET TYPE



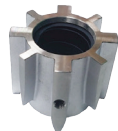
FLAKE CUTTER



NUGGET CUTTER



FLAKE EXTRUDING HEAD



NUGGET EXTRUDING HEAD

## AFI-770F(N)

### AFI-770F(N)

MODEL	STORAGE CAPACITY		DIMENSION (WxDxH)		WEIGT(NET)		ICE SHAPE	
	kg	lb	mm	inch	kg	lb	Optional	
AFI-770F(N)	Storage Bin Option AIB-210(100kg/221lbs)/AIB-212(120kg/265lbs)		560 x 645 x 660	22 x 25 x 26	83	183	FLAKE	NUGGET
CONDENSER	ELECTRICAL OPTIONS	POWER CONSUMPTION	Air / Water 21°C(70°F) / 10°C(50°F)			Air / Water 32°C(90°F) / 21°C(70°F)		
Air Cooled	220~240V/50Hz/1Ph	1200W	330Kg (727.52lbs) – FLAKE 314Kg (692.25lbs) – NUGGET			290Kg (639.34lbs) – FLAKE 288Kg (634.93lbs) – NUGGET		