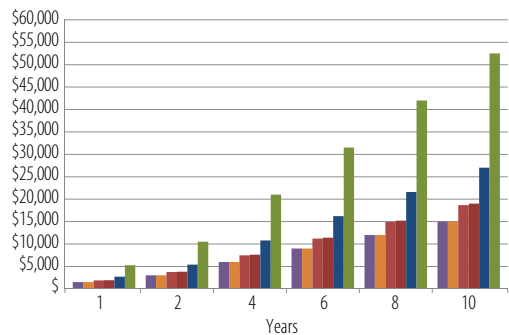


Indicative Cumulative Annual Operation Costs

GLASSWASHERS

	PREMAX GCP	PROFI GC	ECOMAXPLUS G403	ECOMAX402	GWX-2	GW100	
Last Sold	Current	Current	Current	Current	2003	1998	
Water/cycle (litres)	1.9	1.9	2.5	2.5	5.3	10.9	
Cost/Day	\$5.01	\$5.01	\$6.22	\$6.33	\$9.01	\$17.50	
Cumulative Indicative Operating Cost Over 10 Years	1	\$1,502	\$1,502	\$1,865	\$900	\$2,702	\$5,251
	2	\$3,004	\$3,004	\$3,731	\$3,799	\$5,404	\$10,502
	4	\$6,007	\$6,007	\$7,461	\$7,599	\$10,807	\$21,004
	6	\$9,011	\$9,011	\$11,192	\$11,398	\$16,211	\$31,506
	8	\$12,014	\$12,014	\$14,922	\$15,198	\$21,615	\$42,008
	10	\$15,018	\$15,018	\$18,653	\$18,997	\$27,018	\$52,511



Usage factor

Cycles per hour: 10
Running time (h/day): 10
Running days (days/Year): 300

Cost of chemistry

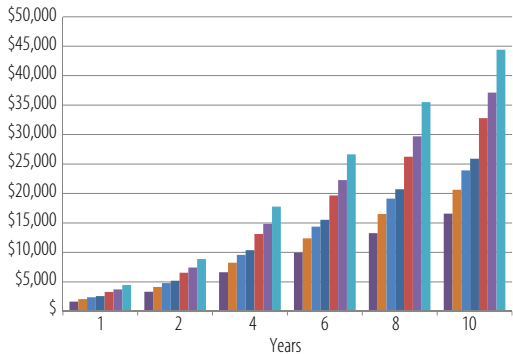
Detergent (\$/kg): 4.55
Rinse aid (\$/kg): 5.50

Dosing of chemistry

Detergent (g/l): 3
Rinse aid (g/l): 0.3
Energy cost electricity (\$/kWh): 0.14
Water / Drain water (\$/m²): 1.41
Machine fills (#/day): 1

HOOD MACHINES

	PREMAX AUP	PROFI AMX	AM900	ECOMAXPLUS H603	H67	AM60	FME	
Last Sold	Current	Current	Current	Current	2008	2002	1998	
Water/cycle (litres)	1.4	2.0	2.5	2.8	2.7	3.0	4.5	
Cost/Day	\$5.53	\$6.88	\$7.98	\$8.63	\$10.93	\$12.38	\$14.80	
Cumulative Indicative Operating Cost Over 10 Years	1	\$1,658	\$2,064	\$2,393	\$2,590	\$3,278	\$3,713	\$4,439
	2	\$3,316	\$4,127	\$4,786	\$5,181	\$6,557	\$7,427	\$8,878
	4	\$6,632	\$8,255	\$9,571	\$10,361	\$13,114	\$14,854	\$17,757
	6	\$9,948	\$12,382	\$14,357	\$15,542	\$19,671	\$22,280	\$26,635
	8	\$13,264	\$16,509	\$19,142	\$20,722	\$26,227	\$29,707	\$35,513
	10	\$16,580	\$20,637	\$23,928	\$25,903	\$32,784	\$37,134	\$44,391



Usage factor

Cycles per hour: 10
Running time (h/day): 10
Running days (days/Year): 300

Cost of chemistry

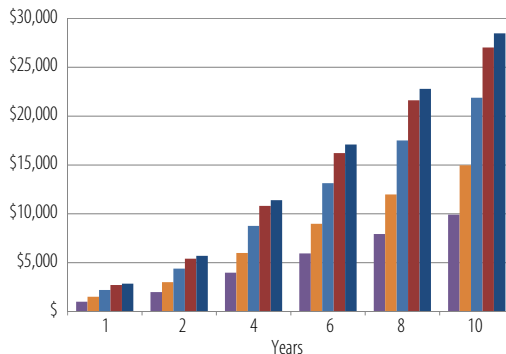
Detergent (\$/kg) 5.10
Rinse aid (\$/kg) 5.50

Dosing of chemistry

Detergent (g/l): 3
Rinse aid (g/l): 0.3
Energy cost electricity (\$/kWh): 0.14
Water / Drain water (\$/m²): 1.41
Machine fills (#/day): 2

UNDERCOUNTERS

	PREMAX FP	PROFI FX	ECOMAXPLUS F503	ECOMAX 502	H50SU	
Last Sold	Current	Current	Current	Current	2008	
Water/cycle (litres)	1.0	2.0	2.8	2.9	3.0	
Cost/Day	\$3.30	\$4.99	\$7.29	\$9.01	\$9.49	
Cumulative Indicative Operating Cost Over 10 Years	1	\$990	\$1,496	\$2,188	\$2,702	\$2,848
	2	\$1,981	\$2,993	\$4,376	\$5,405	\$5,696
	4	\$3,961	\$5,986	\$8,753	\$10,810	\$11,392
	6	\$5,942	\$8,979	\$13,129	\$16,215	\$17,088
	8	\$7,923	\$11,972	\$17,506	\$21,620	\$22,784
	10	\$9,904	\$14,964	\$21,882	\$27,025	\$28,480



Usage factor

Cycles per hour: 10
Running time (h/day): 10
Running days (days/Year): 300

Cost of chemistry

Detergent (\$/kg) 5.10
Rinse aid (\$/kg) 5.50

Dosing of chemistry

Detergent (g/l): 3
Rinse aid (g/l): 0.3
Energy cost electricity (\$/kWh): 0.14
Water / Drain water (\$/m²): 1.41
Machine fills (#/day): 2

Innovative



Easy to Use



Reliable



www.hobartfood.com.au
www.hobartfood.co.nz